

NORITSU

QSS-380IG

The perfect combination of quality,
speed, and cost performance





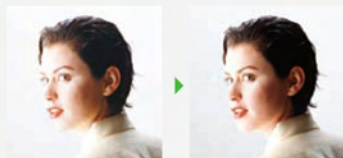
*This photo may include optional components

Image optimization & Raw image file processing



Noritsu's image processing technology "AccuSmart" automatically corrects various scenes, applying a wide range of correction tools such as color correction, backlit scene correction, noise reduction, lens aberration correction and red-eye removal. This brilliant technology saves you time and money, and greatly enhances the outcome of the print. Furthermore, with the EZ Controller you can easily process raw images and then apply AccuSmart technology to turn them into ultra high quality prints.

JPEG data



A large portion of the pixel data in the original JPEG image has highlights that are too light. When the image is corrected, the overall light in the image is reduced, but the pixels representing the highlights that were too light are unsalvageable.

RAW data



All gradations are used, producing an image that is balanced well. There are very few pixels with shadows that are too dark and highlights that are too light.

Expanding the range and the value of the services you offer

The QSS-3801G supports enlargements up to 12 inches wide and also supports thin paper that can be used to make an attractive hard cover for albums and photo books. This system will provide new possibilities for your business by enabling you to produce highly profitable value-added products such as collage prints, square photos, design albums, postcards and greeting cards.



Collage Prints



Design Albums



Square Photos



Colorful Albums

More print versatility with thin paper

The QSS-3801G supports thin paper (160 micrometers), giving it an advantage over previous models. This will enable you to provide more value-added products like postcards and photo covers for hard cover albums.



Excellent features, amazing quality, and an unrivalled cost performance

The QSS-3801G answers today's market needs by providing higher quality prints, more value-added services, a more efficient workflow, and lower costs. In short, this minilab provides the solutions you and your customers need while achieving an excellent cost performance.

An excellent capacity to spark your business

Speed is a vital tool for photo retailers. This minilab boasts ample speed and capacity to handle urgent large-volume orders and enlargement orders, assuring excellence in performance, quality and speed.

6" x 4"
(152 x 102mm)

Approx. **1,480** prints / hour

5" x 7"
(127 x 178mm)

Approx. **920** prints / hour

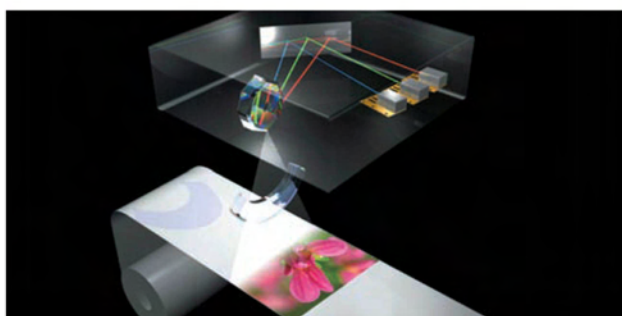
10" x 8"
(254 x 203mm)

Approx. **420** prints / hour

12" x 10"
(305 x 254mm)

Approx. **350** prints / hour

The first minilab in the industry to use direct-modulation laser diodes for all three colors (RGB)!



Our state-of-the-art digital laser engine, which employs advanced technology that has been developed and refined by Noritsu, boasts a 640dpi resolution and makes prints with 5 times more pixels than prints made with standard resolution minilabs. It accurately portrays fine details and color gradations, resulting in beautiful photos that are sure to satisfy your customers. This helps to maintain consistent print quality.



An amazing 640dpi (12 bits). 79 million pixels for an A3 size print.

Having a printer that produces high definition, high quality prints provides a big advantage for the photo retailer. The QSS-3801G's laser engine has an unprecedented resolution of 640 dpi for both main scanning and sub scanning. This high resolution results in finely detailed prints that have a special dimension that is not available with other printers.

300dpi (8bit)



640dpi (12bit)



This system has everything you need to enhance your workflow



*This photo may include optional components

With its user-friendliness, high level of automation, and ability to be integrated into a network that meets your individual needs; the QSS-3801G helps to enhance your efficiency and perform an array of tasks. This minilab will bring a higher level of speed and productivity to your business.

Smooth operation with automatic functions

■ Colorimeter

The colorimeter is built into the processor. During setup, the setup print is automatically fed into the colorimeter as it comes out of the dryer.



■ Auto daily setup

Daily setup is carried out automatically using the program timer. This reduces the prep time required before business hours, helping you to reduce labor fees and use your time more efficiently.

■ Interrupted orders signified by LED lamp

The EZ Controller software has the unique ability to interrupt orders in process to give preference to urgent orders.

LED lamps on the order sorter are used in conjunction with this to indicate which orders have been interrupted and which print trays the interrupted orders are in.



The EZ Controller (sold separately) improves efficiency and reduces costs

The EZ Controller takes care of everything from print order management to color correction of the individual images. It can be installed in networked computers, providing a flexible system in which image editing can be carried out efficiently with multiple computers.



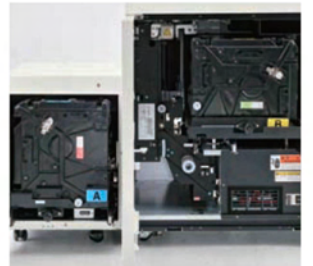
Order screen / PJP screen



Order Controller screen

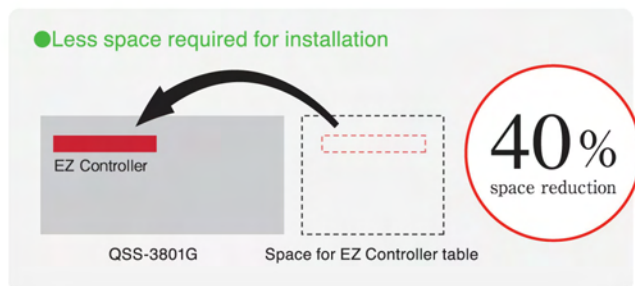
■ Dual magazine system (option)

The dual magazine system enables you to increase the number of prints and/or variety of prints you can make without changing magazines.



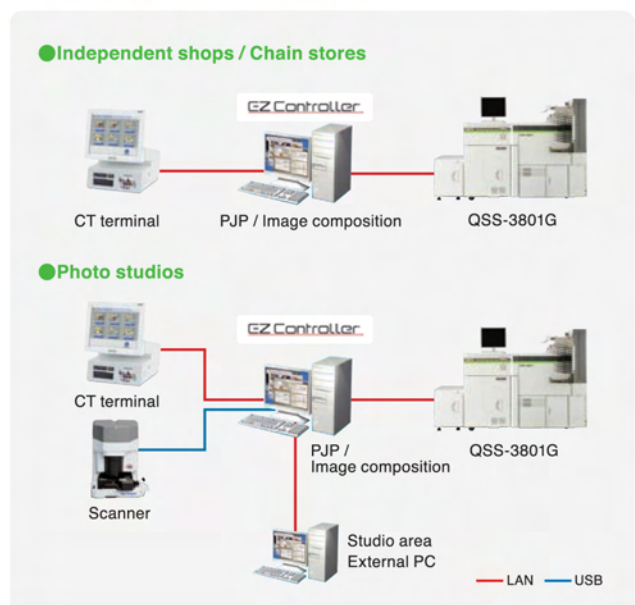
The space-saving design provides a more versatile layout

In addition to being compact in size, the top of the QSS-3801G is the same level all the way across, making a wide flat surface on which the EZ Controller can be installed. Not having to place the EZ Controller PC on a separate table enables a configuration that takes up 40% less space than when the EZ Controller is placed on a separate table.



Can choose a network that is just right for you

Whether you have a small independent shop or a large-scale photo studio you can choose a network that meets your needs.



High capacity models to speed up your business

High quality, High capacity

QSS-37G series



QSS-3704G **6" x 4"** (152 x 102mm)
Approx. **2,120** prints / hour

QSS-3705G **6" x 4"** (152 x 102mm)
Approx. **2,360** prints / hour

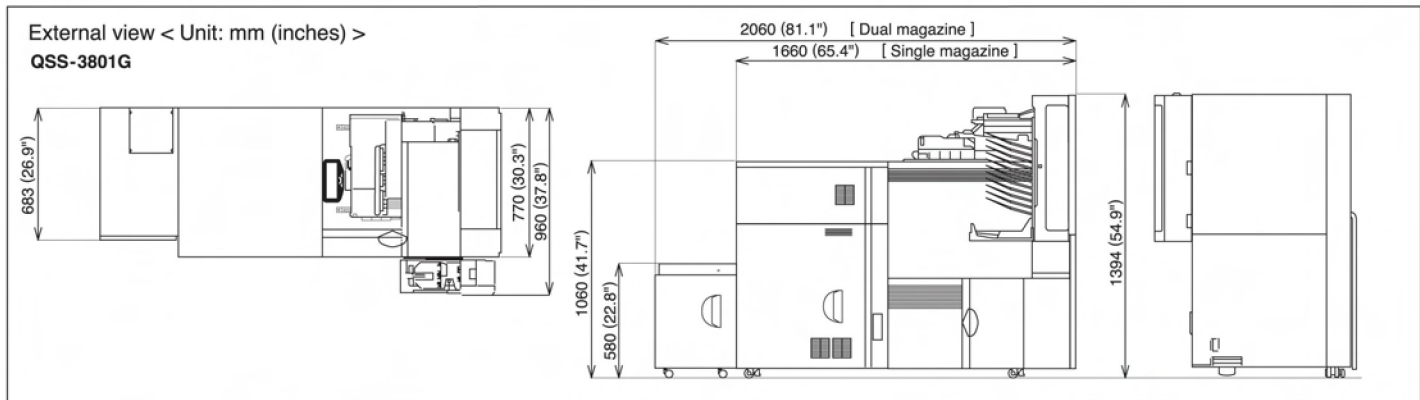
With its 640 dpi resolution and 12 bit color depth, the QSS-37G series gives you awesome print quality, as well as high speed printing up to 2360 prints per hour. This combination of quality and speed provides a completely different level that is above the competition. The efficiency-enhancing high-speed printing and triple magazine / quad magazine system (factory option), as well as the system's scalability and productivity, make the QSS-3704G and QSS-3705G ideal minilabs.

		Specifications
Print sizes	Paper width	82.5, 89, 102, 114, 117, 120, 127, 130, 152, 165, 178, 203, 210, 216, 240, 254, 279, 305mm (3.2, 3.5, 4, 4.5, 4.6, 4.7, 5, 5.1, 6, 6.5, 7, 8, 8.3, 8.5, 9.4, 10, 11, 12 inches)
	Paper advance length	Minimum: 82.5mm Maximum: 457.2mm (18") when the width is 82.5 to 120mm (3.2" to 4.7") / 914.4mm (36") when the width is 127 to 305mm (5" to 12")
Exposure system		Laser exposure system
Print resolution		640dpi x 640dpi
Paper supply		Single magazine system / Dual magazine system *1
Order sorter		12 orders
Dimensions		see "External View" below
Rated power capacity		AC 200V 1P2W 4.8KVA (24A) (Other specifications available)
Power consumption *2		Approx. 312kwh / month
Weight *3	Printer-Processor	Approx. 501kg (1102 lbs)

Print size (Width x Advance length)	Estimated processing capacity (prints / hour)*2 *4
127 x 89 mm (5" x 3.5")	Approx. 1650
152 x 102 mm (6" x 4")	Approx. 1480
127 x 178 mm (5" x 7")	Approx. 920
254 x 203 mm (10" x 8")	Approx. 420
305 x 254 mm (12" x 10")	Approx. 350
305 x 457 mm (12" x 18")	Approx. 200

		Input / Output specifications	
Compatible input media *5	Standard	HDD, CD-ROM, CD-R, CD-RW, DVD-ROM, DVD±R/RW, DVD-RAM	
	Option	Microdrive, CompactFlash, SmartMedia, SD Card, MMC, RS-MMC, Mini SD Card, Memory Stick, Memory Stick Pro, Memory Stick Duo, Memory Stick Pro Duo, xD-Picture Card, USB Flash Memory	
	Format	JPEG, Progressive JPEG, Bitmap, PSD, PCX, TGA, Flash Pix, TIFF (RGB uncompressed), HD Photo, RAW, PDF	
Input film *6	Film type	Color negative and positive, B&W negative	
	Size	LS-600/1100	135F, 135H, 135P, 135FP, 135FPS, IX240
		HS-1800	110, 135F, 135H, 135P, 135FP, 135FPS, IX240, 6x4.5, 6x6, 6x7, 6x8, 6x9, 6x12
Film scanning method	Main scanning: Independent line exposure via 3 line CCD Sub scanning: Film movement		
Compatible output media *5	Standard	HDD, CD-R, CD-RW, DVD-RAM	
	Option	DVD-R, Microdrive, CompactFlash, SmartMedia, SD Card, MMC, RS-MMC, Mini SD Card, Memory Stick, Memory Stick Pro, Memory Stick Duo, Memory Stick Pro Duo, xD-Picture Card, USB Flash Memory	
	Format	JPEG, Bitmap, Flash Pix, TIFF (RGB uncompressed)	

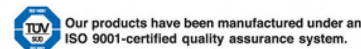
*1 Available as an option.
 *2 Calculated according to our criteria. The actual value you achieve may be different.
 *3 Weight does not include chemicals.
 *4 Using 10 megapixel images.
 *5 Depends on the PC, card reader used. Indicates specifications when using the computer system supplied by NK Works.
 *6 When used with film scanner. (sold separately)



NK Works Co., Ltd.
 579-1 Umehara, Wakayama-Shi, 640-8550, Japan
 Telephone: (81) 73-454-0345
 www.noritsu.co.jp

QSS & AccuSmart™ are trademarks of NK Works Co., Ltd.
 All other product and company names herein may be trademarks of their respective owners.

The specifications, information, and appearance of the machine herein are subject to change without notice.



Noritsu America Corporation
 6900 Noritsu Avenue
 Buena Park, CA 90620 USA
 Telephone: (1) 714-521-9040
 www.noritsu.com

Noritsu Canada Ltd.
 2680 Argentia Road
 Mississauga, ON L5N 5V4, Canada
 Telephone: (1) 905-567-8982
 www.noritsu.com